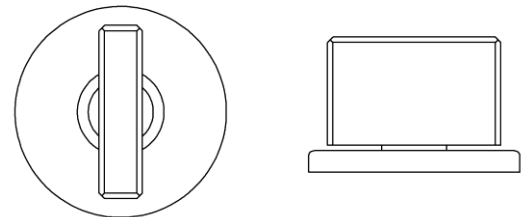




► **THUMBTURN HT1067 - BACKPLATE HT3001**

The HT1067 is a rectangular thumbturn with chamfered edges and center pivot.

See HT3001 for additional backplate information.



THUMB	L x W	BACKPLATE	PROJECTION
1" x 1/4"		1-1/4" diameter	13/16"
1-3/8" x 1/4"		1-5/8" diameter	13/16"