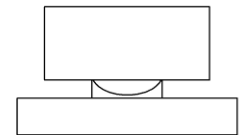
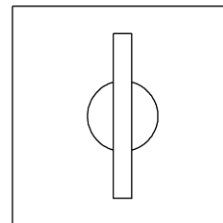


► **THUMBTURN HT1110 - BACKPLATE HT3101**

The HT1110 thumbturn is a simple elegant rectangle that is usable in traditional, transitional, or contemporary applications.

See HT3101 for additional backplate information.



THUMB	L x W	BACKPLATE	PROJECTION
1-1/8" x 1/8"		1-1/2" square	7/8"