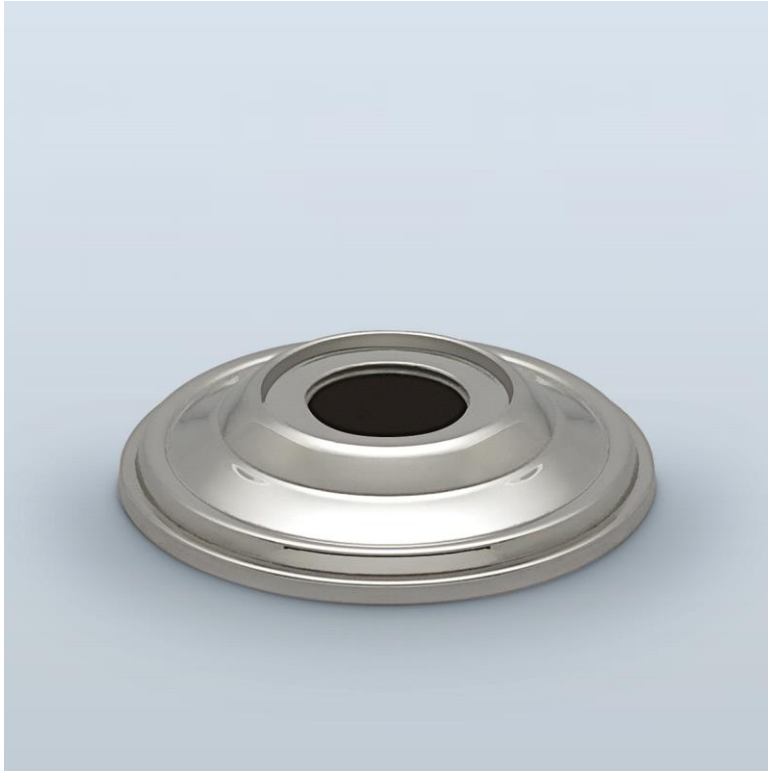




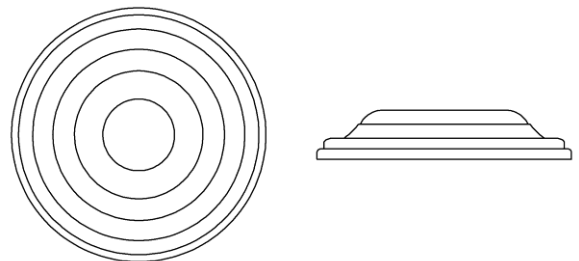
H . T H E O P H I L E

SINCE 1882



► **BACKPLATE HT3017**

The HT3017 rosette with its stepped concentric rings, dates to a 1940s design. Available in a range of sizes to coordinate with knobs, levers, and cabinet pulls. Backplate thicknesses may vary based on handle selection as well as mounting solutions.



Mfg: HT3017