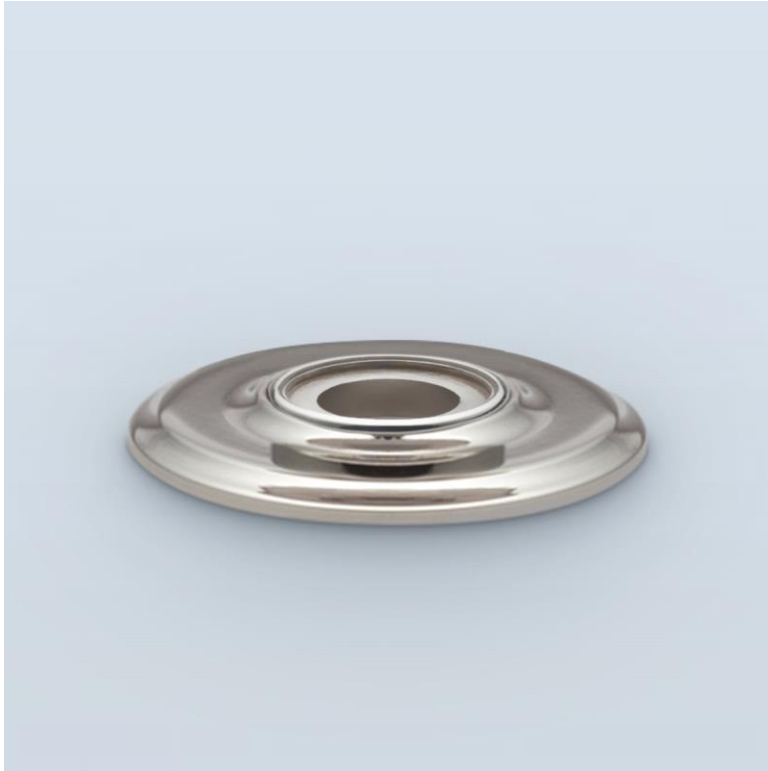




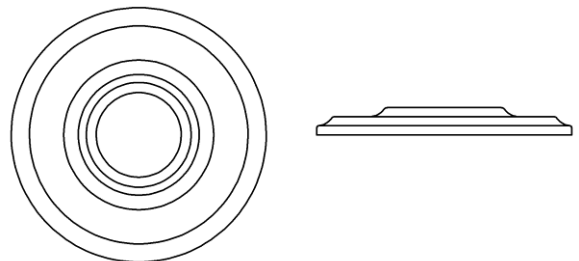
H . T H E O P H I L E

SINCE 1882



► **BACKPLATE HT3044**

The HT3044 backplate is a stepped rosette with concealed mounting. Available in a range of sizes to coordinate with knobs, levers, and cabinet pulls. Backplate thicknesses may vary based on handle selection as well as mounting solutions.



Mfg: HT3044