



H . T H E O P H I L E

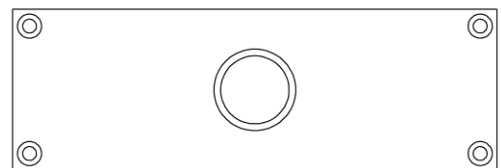
SINCE 1882



► **BACKPLATE HT3100v**

The HT3100v backplate series describes a simple rectangular backplate with visible screws. It is available in a variety of sizes and hole patterns to accommodate passage, privacy, and entry functions.

Available in a range of sizes to coordinate with knobs, levers, and cabinet pulls. Length and width should be specified in 1/4" increments when ordering; thickness in 1/16" increments. Backplate thicknesses may vary based on handle selection.



Mfg: HT3100v