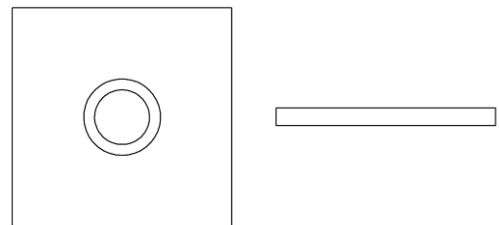




► **BACKPLATE HT3101**

The HT3101 backplate is a clean, minimal, square backplate with concealed mounting. It is available in a variety of sizes and hole patterns to accommodate passage, privacy, and entry functions.

Available in a range of sizes to coordinate with knobs, levers, and cabinet pulls. Lengths/widths should be specified in 1/4" increments and thickness should be specified in 1/16" increments. Backplate thicknesses may vary based on handle selection.



Mfg: HT3101