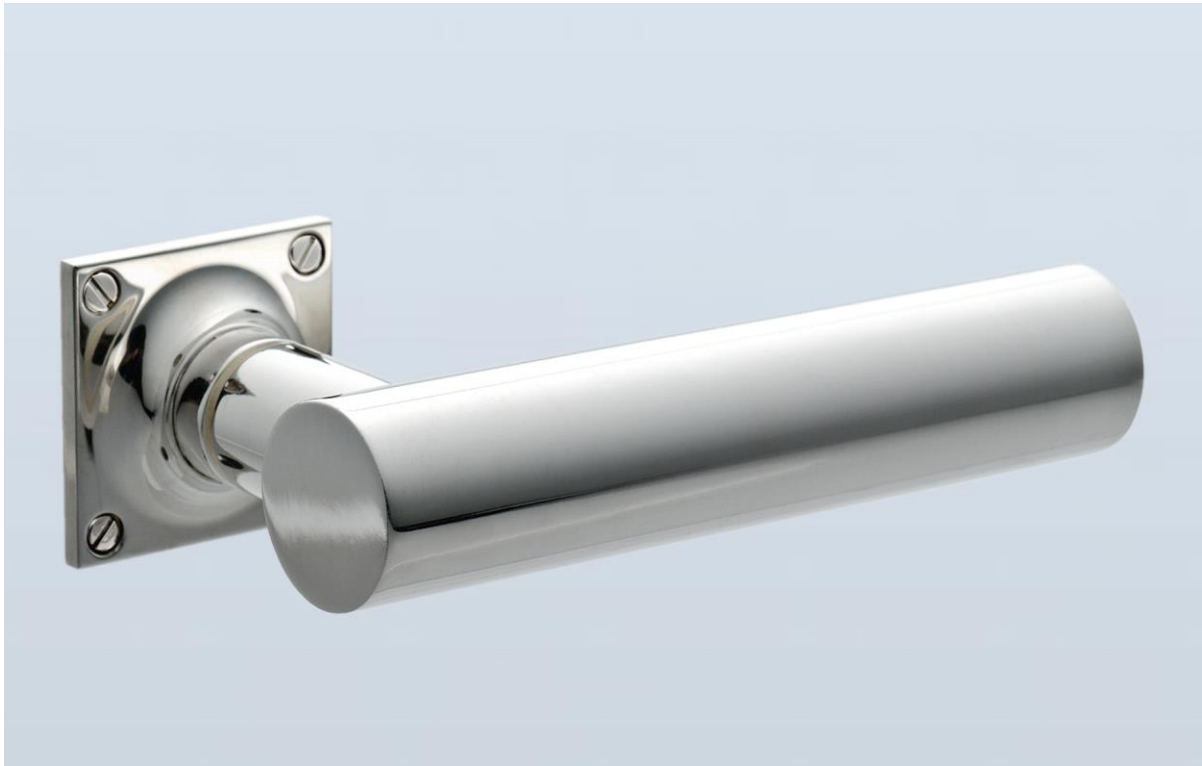




H . T H E O P H I L E

SINCE 1882



► **LEVER HT5700 - BACKPLATE HT3190v**

The clean modern design of the HT5700 pipe lever is distinguished by its scale and proportions.

The 5" lever is shown here with a 1-1/2" square backplate. See HT3190v for additional backplate information.

See HT5600 for coordinating T-pull sizes.

LEVER LENGTH	BACKPLATE	PROJECTION
3-3/4" overall	1-1/2" square	2-1/4"
4" overall	1-1/2" square	2-1/4"
4-1/4" overall	1-1/2" square	2-1/4"
4-1/2" overall	1-1/2" square	2-1/4"
4-3/4" overall	1-1/2" square	2-1/4"
5" overall	1-1/2" square	2-1/4"

