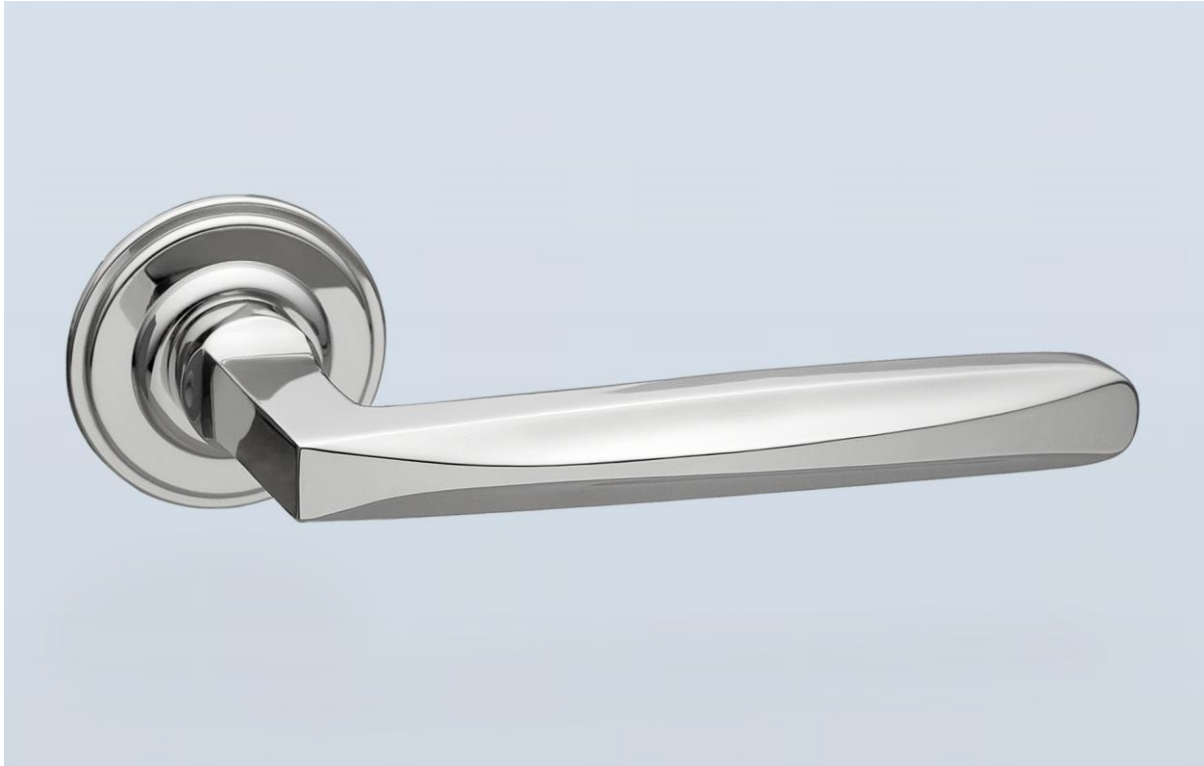




H . T H E O P H I L E

SINCE 1882



► **LEVER HT6004 - BACKPLATE HT3228**

The HT6004 lever is based on a late 1930s design from Northern Europe. With its carefully faceted and radiused edges, this lever has an extremely comfortable hand.

See HT3228 for additional backplate information.

LEVER LENGTH	BACKPLATE	PROJECTION
5-5/16" overall	2" diameter	2-5/8"

