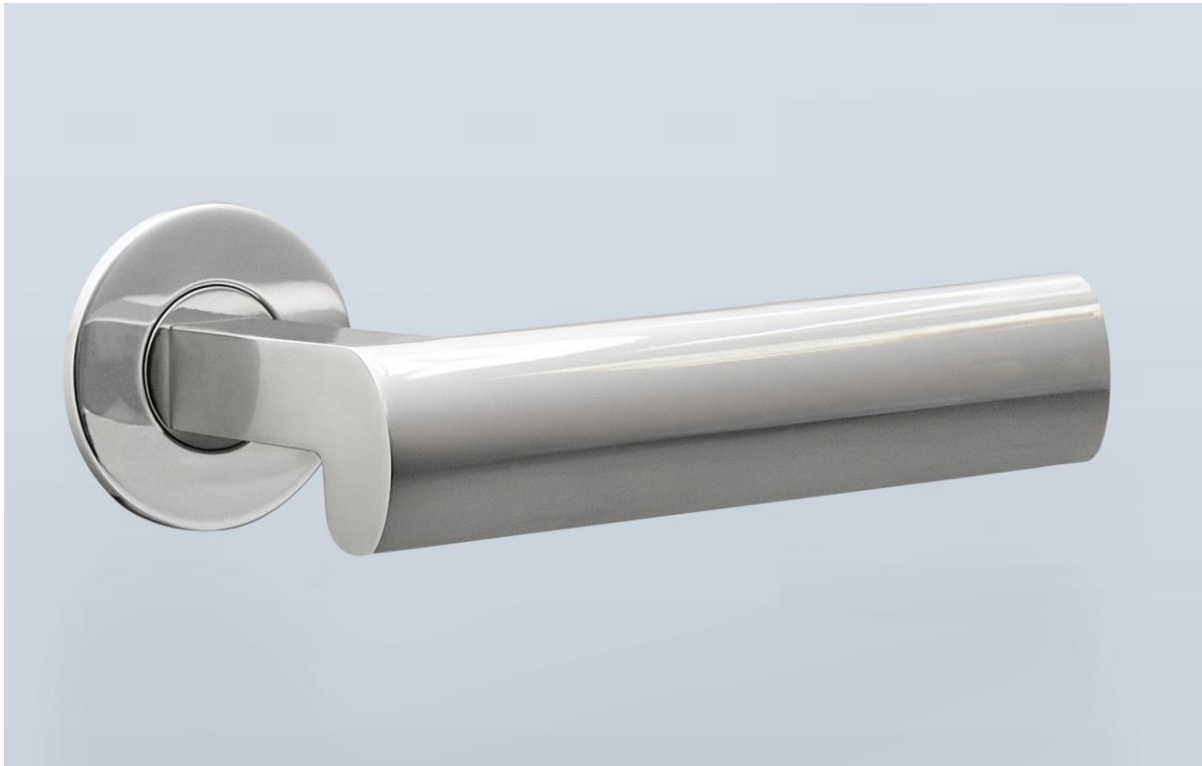




H . T H E O P H I L E

SINCE 1882



► **LEVER HT6006 - BACKPLATE HT3001**

The HT6006 lever is based on an English lever design from the 1930s which combines an oval profile handle and a rectilinear shaft. It enlarges the scale of the original for contemporary applications, while maintaining the elegance of the original form.

The 5" lever is shown here with a 1-13/16" round backplate. See HT3001 for additional backplate information.

See HT4600 for coordinating T-pull designs.

LEVER LENGTH	BACKPLATE	PROJECTION
4" overall	1-13/16" diameter	1-15/16"
5" overall	1-13/16" diameter	1-15/16"

