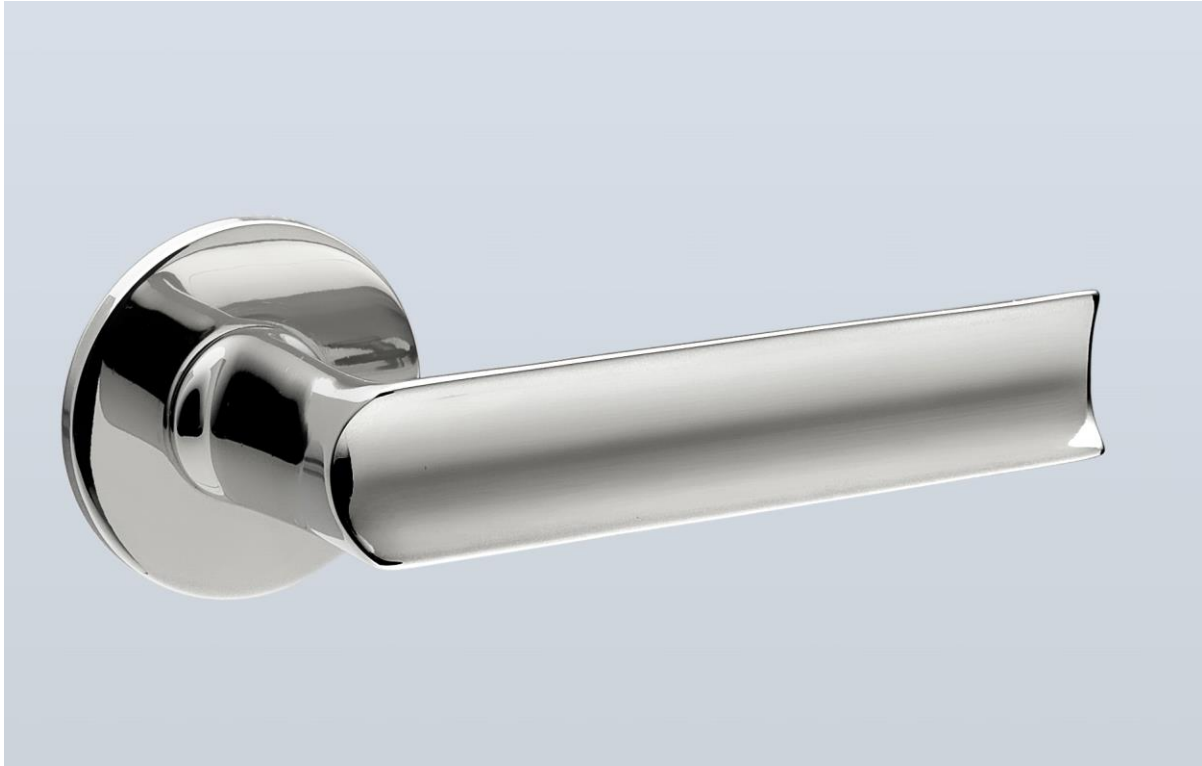




H . T H E O P H I L E

SINCE 1882



► LEVER HT6030 - BACKPLATE HT3001

The HT6030 lever is based on an original design by Walter Gropius, which cleverly plays with concave contouring to create an ergonomic handle.

The 4-3/4" lever is shown here with a 2" round backplate. See HT3001 for additional backplate information.

LEVER LENGTH	BACKPLATE	PROJECTION
4-1/8" overall	2" diameter	1-11/16"
4-3/4" overall	2" diameter	1-11/16"
5" overall	2" diameter	1-11/16"

