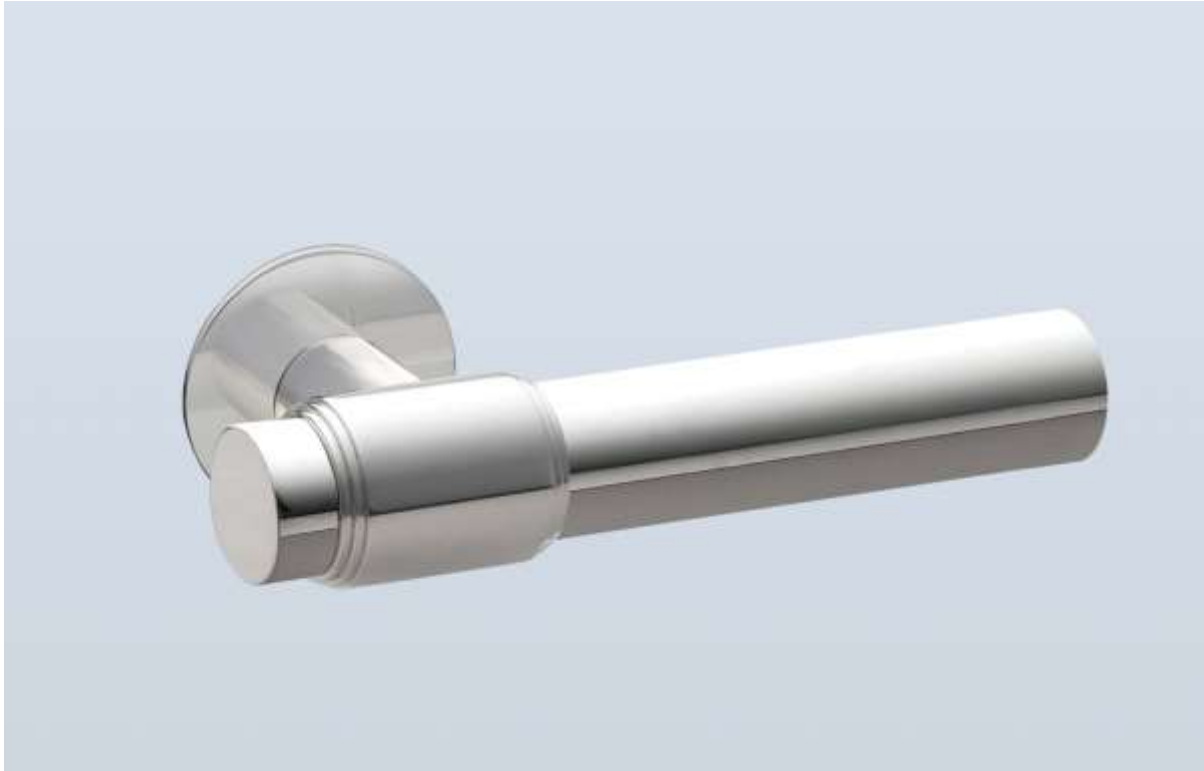




H . T H E O P H I L E

---

SINCE 1882



► **LEVER HT6191 - BACKPLATE HT3001**

---

The HT6191 lever is inspired by a Ruhlmann design and features simple line detailing and a cylindrical shaft.

LEVER LENGTH	BACKPLATE	PROJECTION
5" overall	1-7/8" diameter	2-3/8"



H . T H E O P H I L E

---

SINCE 1882



► **LEVER HT6191 - BACKPLATE HT3001**

---

The HT6191 lever is inspired by a Ruhlmann design and features simple line detailing and a cylindrical shaft.

LEVER LENGTH	BACKPLATE	PROJECTION
5" overall	1-7/8" diameter	2-3/8"