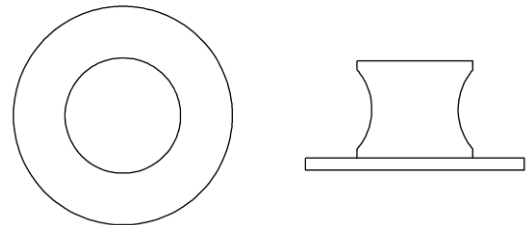




► **CABINET PULL HT9216 - BACKPLATE HT3001**

The HT9216 is a cylindrical pull with contoured curves on two sides. Shown here with HT3001 backplate. Size shown is 1-3/16" pull with 2-1/4" diameter backplate.



PULL	BACKPLATE	PROJECTION
1-3/16" diameter	2-1/4" diameter	1-1/8"