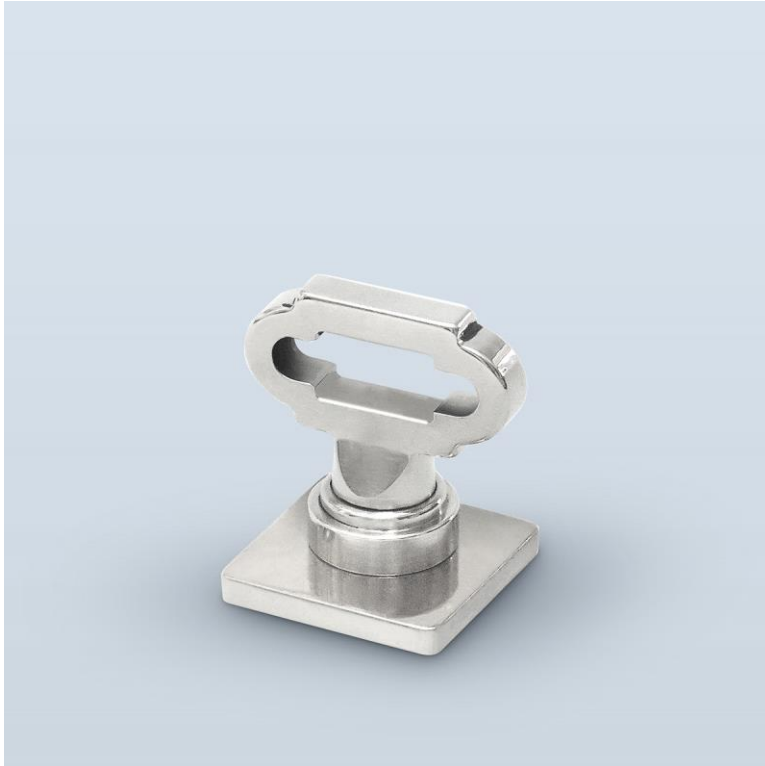




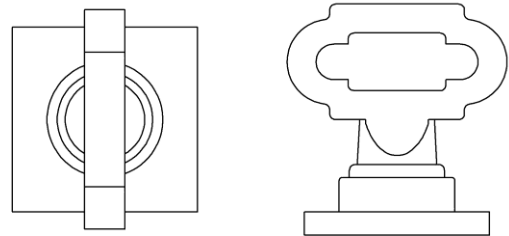
H . T H E O P H I L E

SINCE 1882



► **CABINET PULL HT9232 - BACKPLATE HT3101**

The HT9232 is a key style cabinet pull, shown here with HT3101 backplate. Size shown is 1-3/16" with 1" square backplate at 1/8" thickness.



PULL	L x W	BACKPLATE	PROJECTION
1-3/16" x 9/16"		1" square	1-1/4"