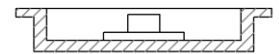
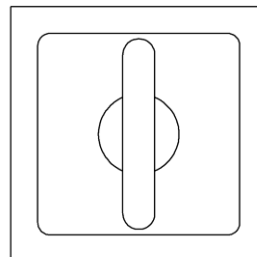




► RECESSED PULL HT9460t

This minimal recessed pull HT9460t is fitted with a thumbturn and is typically specified for sliding pocket doors. It is available as a plain recessed pull, with a thumbturn, emergency release button, or keyed cylinder; specify when ordering. Other thumbturn designs can be specified separately.

Standard box depth (mortised depth behind face frame) is shown.



LENGTH	WIDTH	PROJECTION	BOX DEPTH
2"	2"	1/16"	5/16"