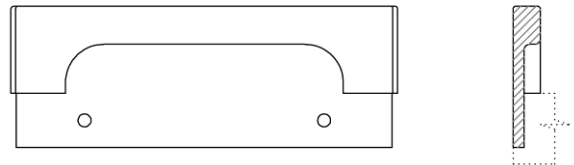




► **EDGE PULL HT9523**

The HT9523 edge pull represents the meeting of a modern design sensibility with the organic shapes of cast bronze. The fully mortised handle offers a depressed grip on one side; its soft modernist outline is impeccable.

The flange mortises flush into the edge of the door or drawer and is available in a range of sizes to suit various door and cabinetry applications.



LENGTH	WIDTH	PROJECTION	FULL DEPTH
4-7/16"	5/16"	1"	1-5/8"

