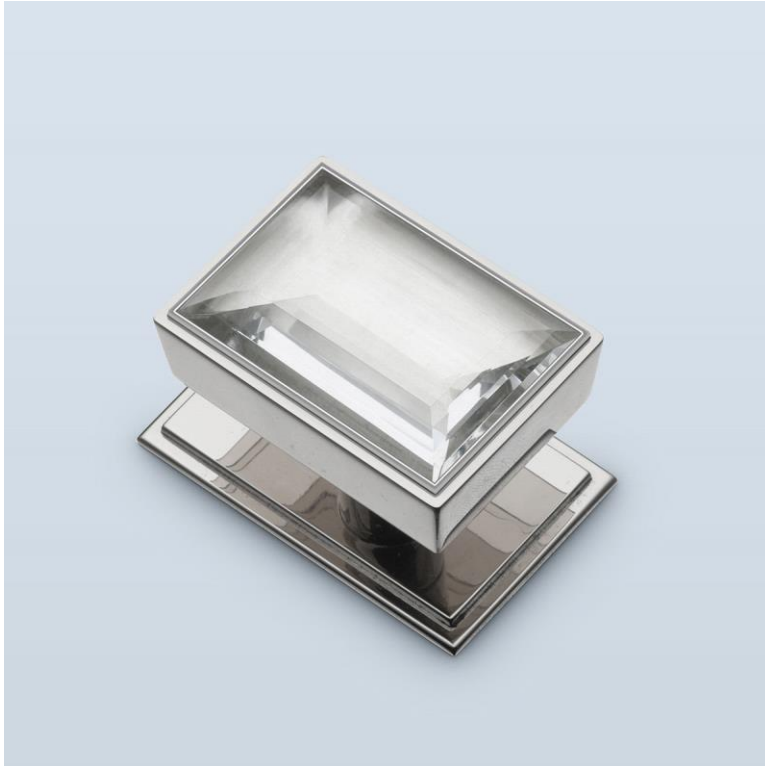




H . T H E O P H I L E

SINCE 1882



► **CABINET PULL HT9996 - BACKPLATE HT3250**

The HT9996 rock crystal pull is a rectangular design with crisp corners and a projecting shaft. It is available in a range of precious stones, and the casings are lined in sterling silver to best feature the stone's coloring. The exterior of the casing is platable in various standard and custom finishes.

Shown here with HT3250 backplate. Size shown is 2-1/8" pull with 5/8" shaft, and 2-9/16" x 1-5/8" backplate with 3/16" thickness.

PULL	L x W	BACKPLATE L x W	PROJECTION
2-1/8" x 1-1/2"		2-9/16" x 1-5/8"	1-7/16"

